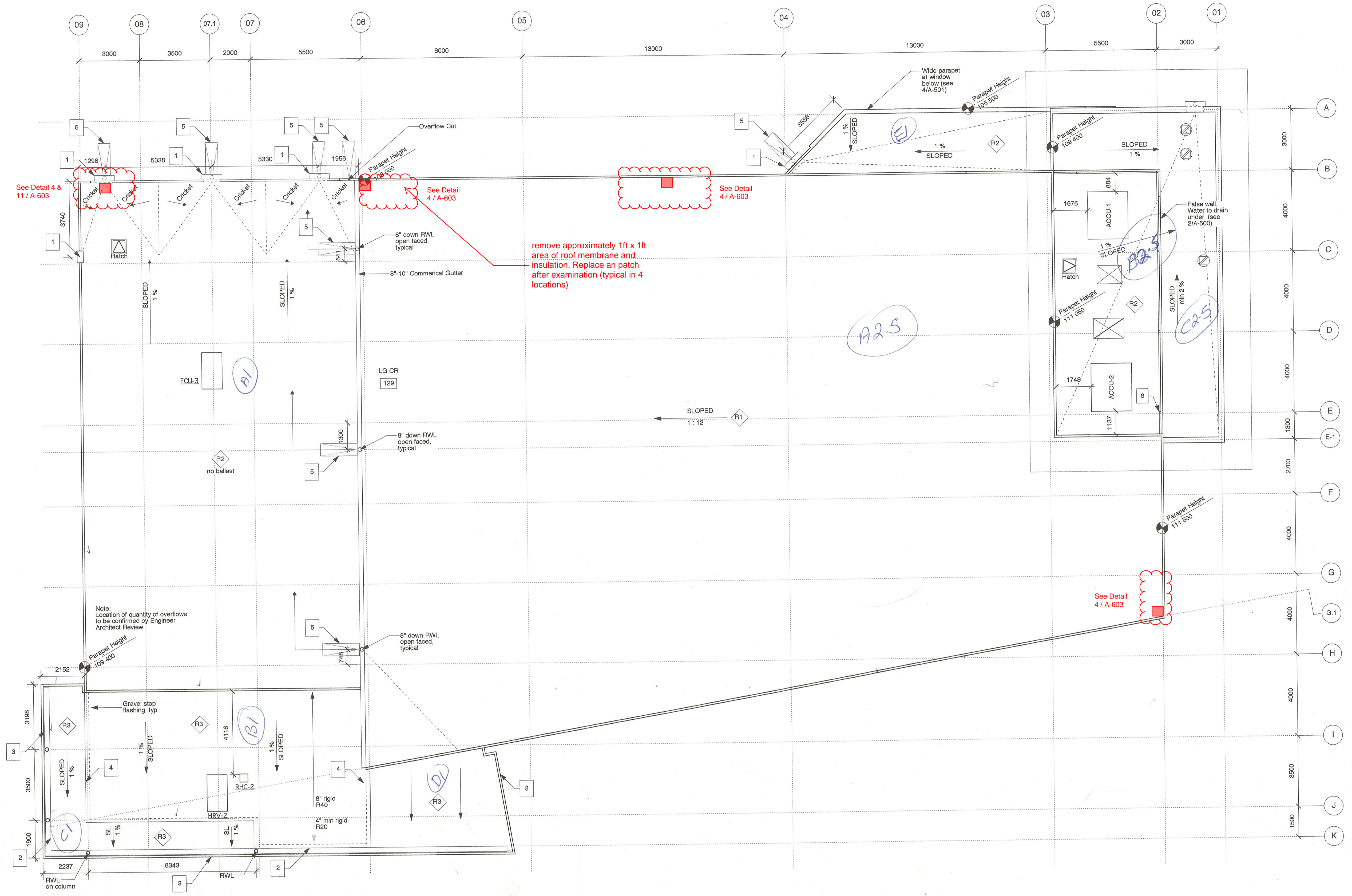


No.	Date	Revision Notes
1	2011 Feb 18	Issued for 33% review
2	2011 Mar 04	Issued for 55% review
3	2011 Mar 18	Issued for 66% Co-ord
4	2011 Apr 20	Issued for 96% review
5	2011 July 12	Issued for tender
6	2011 Sept 28	Issued for Bldg. Permit



Note:  
 Location of quantity of overflows  
 to be confirmed by Engineer  
 Architect Review

remove approximately 1ft x 1ft  
 area of roof membrane and  
 insulation. Replace a patch  
 after examination (typical in 4  
 locations)

See Detail  
 4 / A-603

- ABBREVIATIONS:  
 ACT = ACoustical TILE  
 BF = BAR FRIDGE  
 CON = CONCRETE  
 EK = EXISTING  
 FD = FLOOR DRAIN  
 FG = FLOOR GRILLE  
 NIC = NOT IN CONTRACT  
 PT = PAINT  
 RCB = RUBBER COVE BASE  
 RSB = RUBBER SHEET FLOORING  
 SV = SHEET VINYL  
 TL = TILE  
 TP = TELEPHONE  
 TS = TRANSITION STRIP  
 TYP = TYPICAL  
 VM = VENDING MACHINE  
 WF = WATER FOUNTAIN

- Floor Plan Legend
- Wall Type
  - Keynote
  - Plan Detail
  - Door, see door schedule
  - Interior window, see window schedule
  - Section Marker
  - Exterior Elevation
  - Floor Finish Type
  - Closed Circuit Television Camera, fixed position. See electrical.

- Notes
1. Overflow scupper and cut in parapet
  2. Gutter at exterior canopy (see 3/A-500, 2/A-502 & 4/A-502)
  3. Uninsulated canopy over bicycle storage, recycling area, and main entry
  4. Dashed line of building footprint below
  5. Splash pad.
  6. False wall supports. See Structural.

1 Roof Plan  
 Scale: 1:100



This drawing must not be scaled. The contractors shall verify all dimensions and other data on site prior to commencement of work. Discrepancies, errors, and omissions are to be reported to the Architect prior to proceeding with the Work.

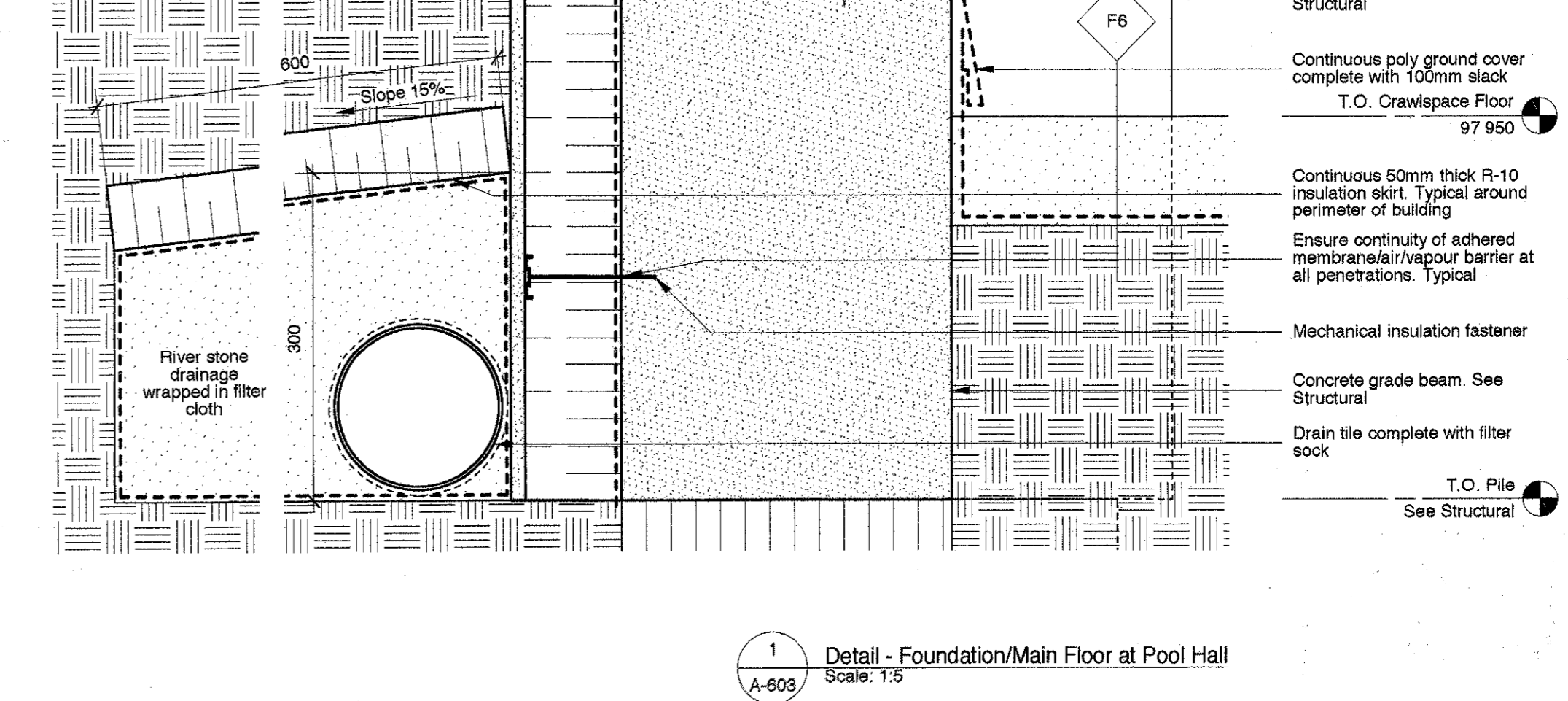
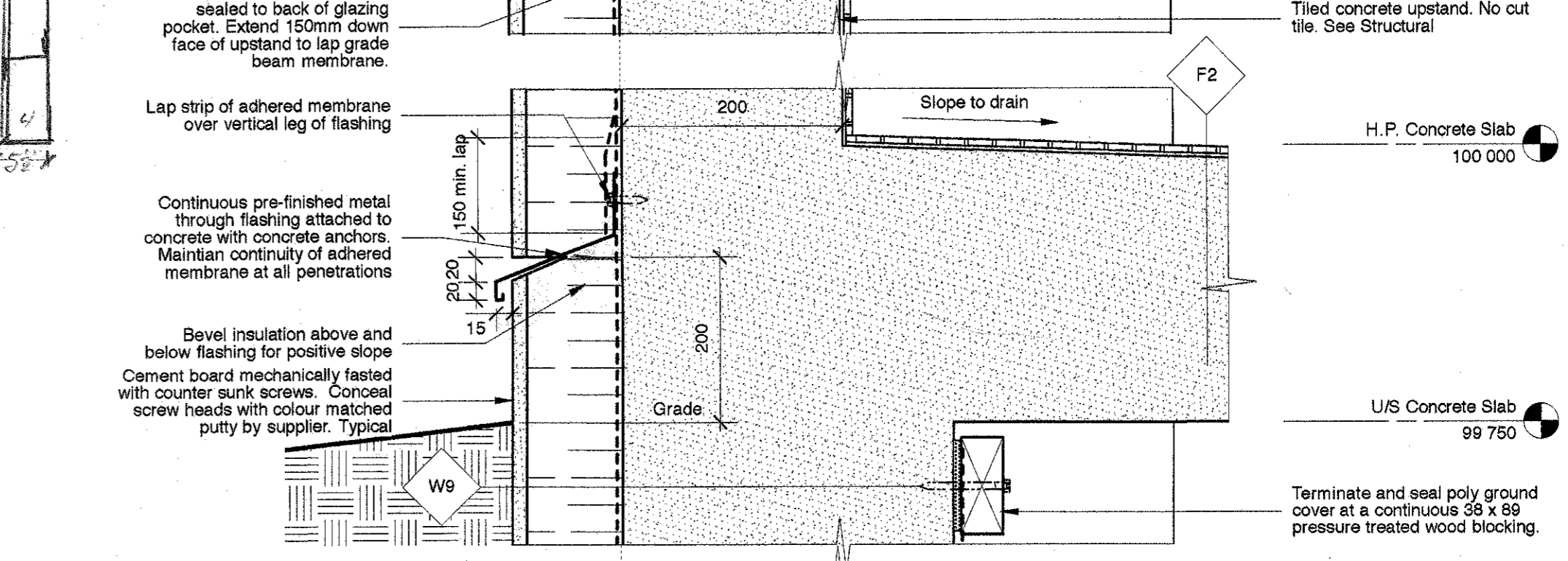
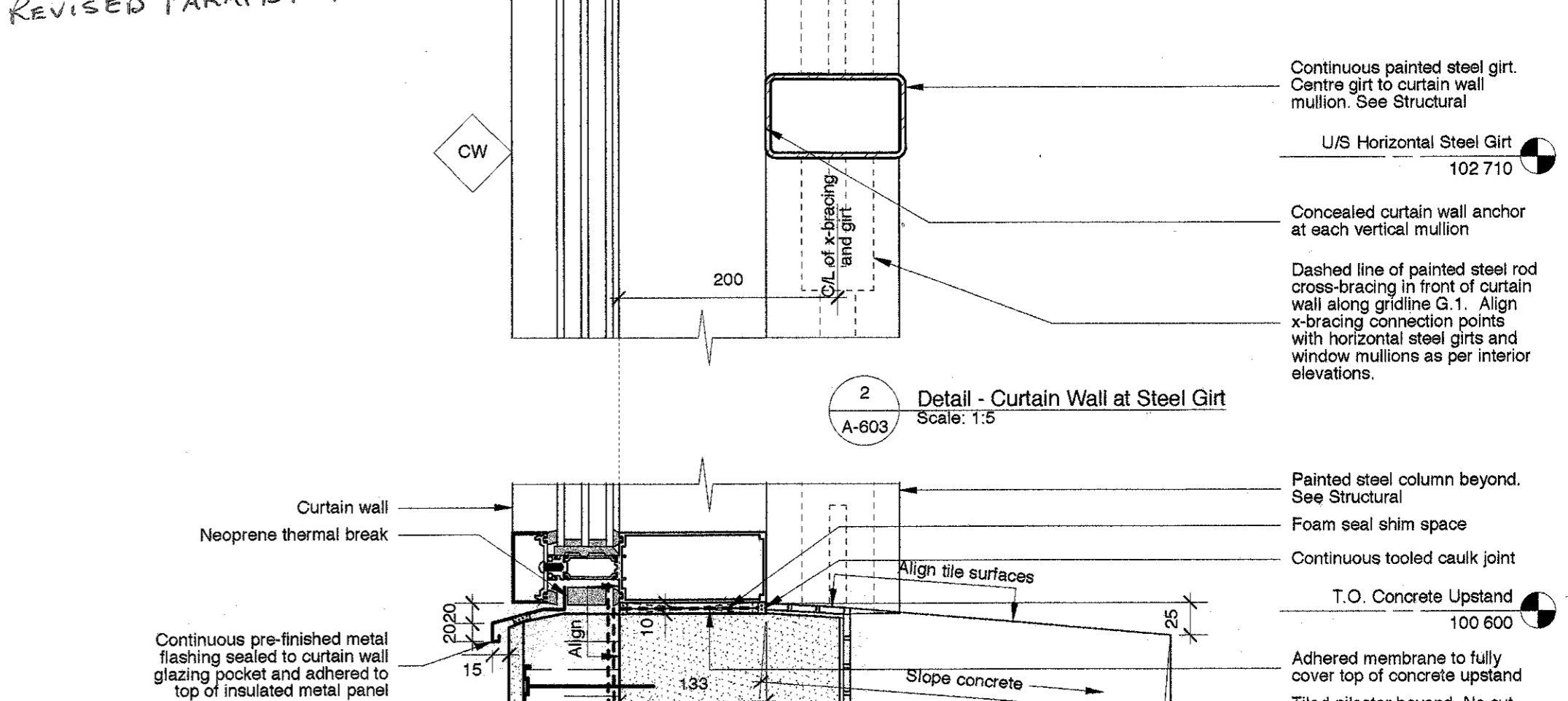
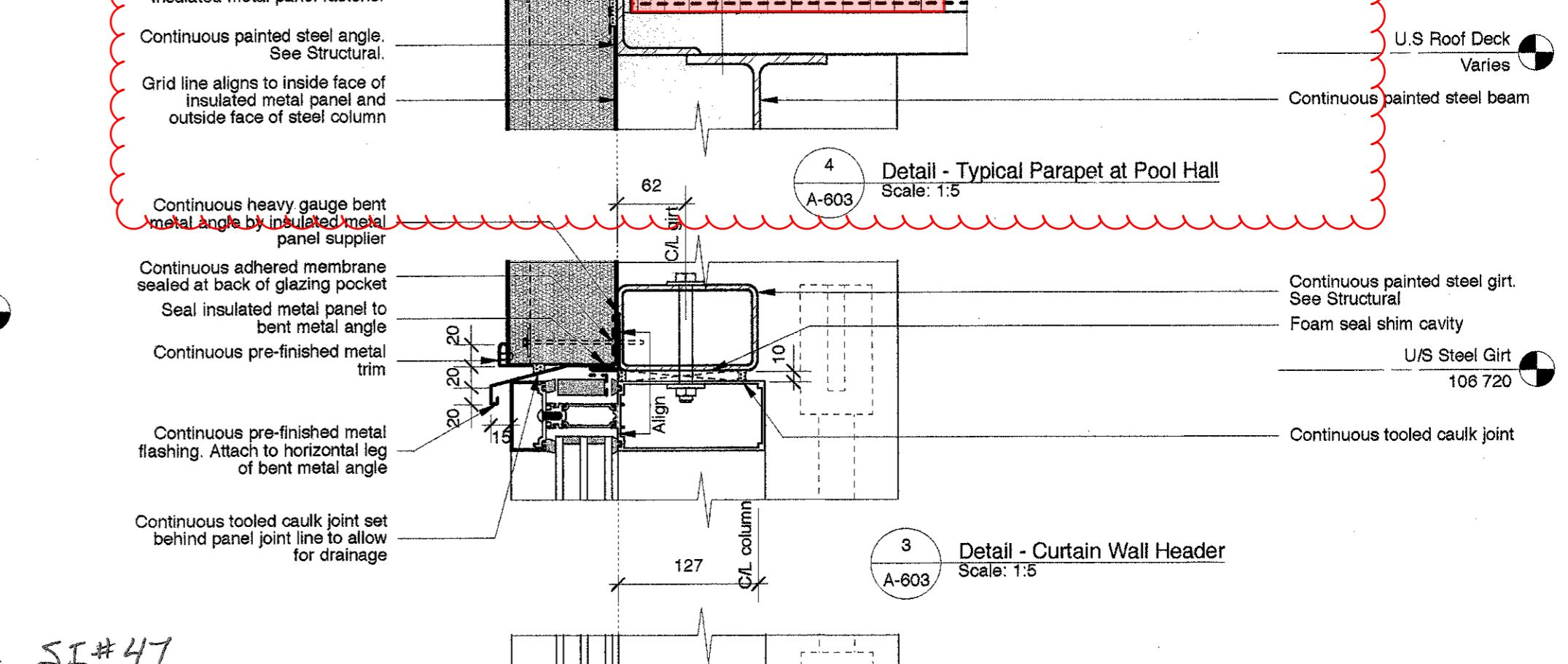
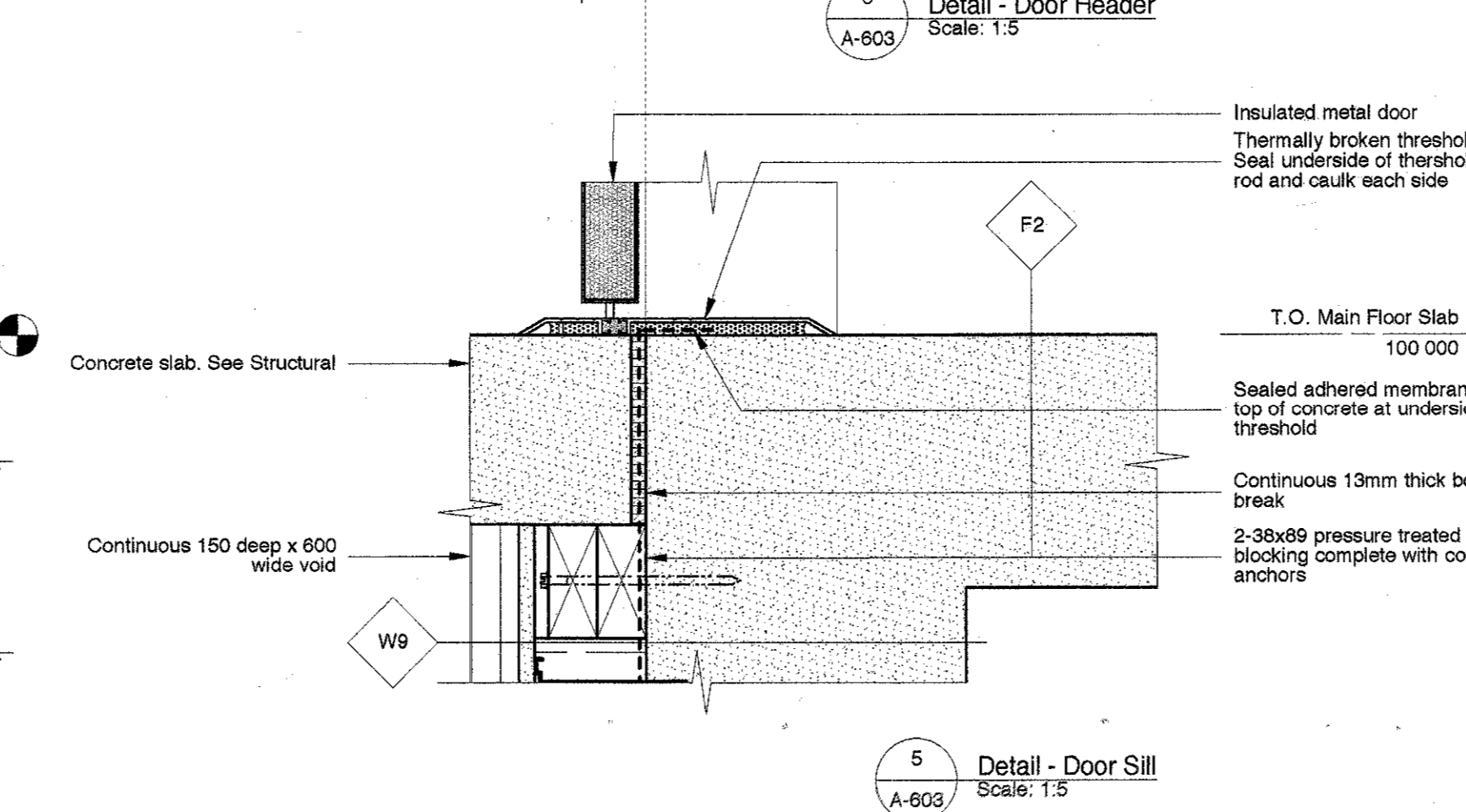
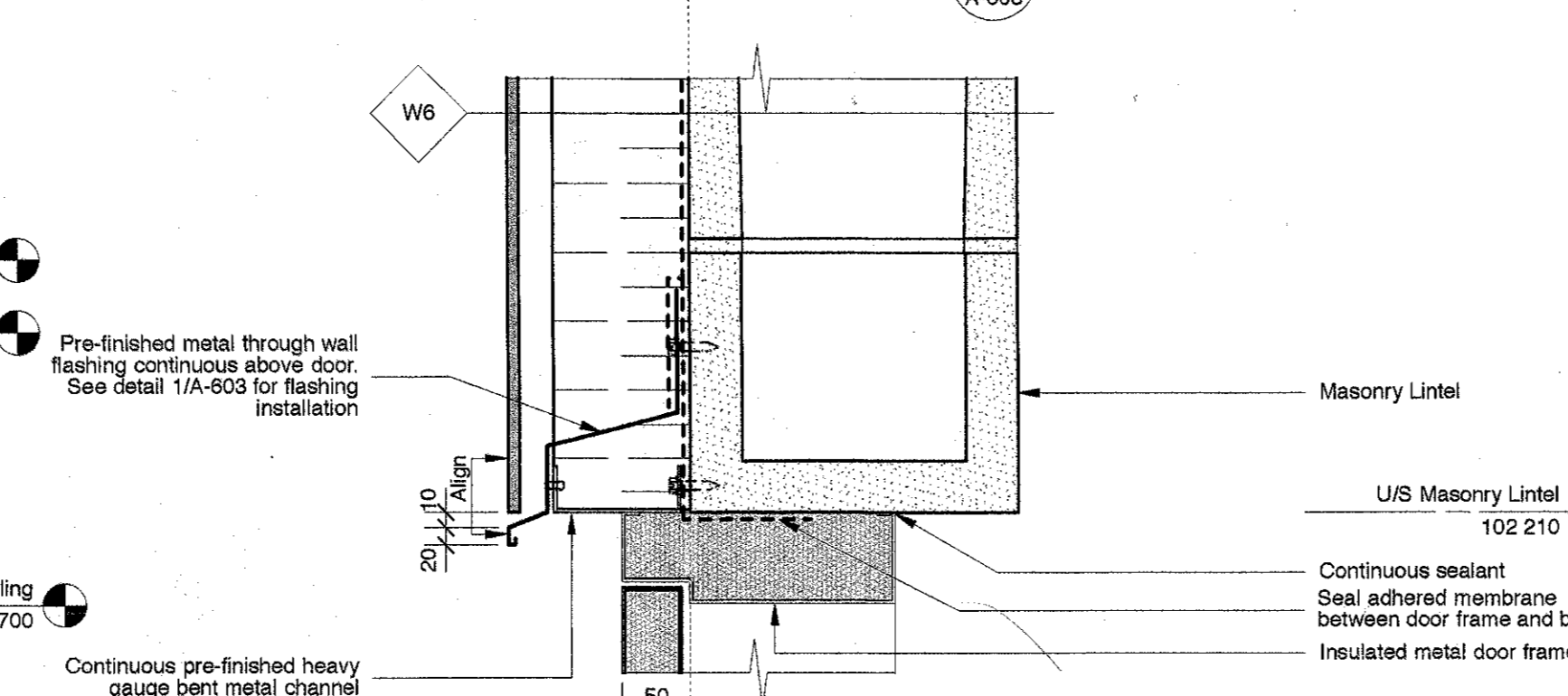
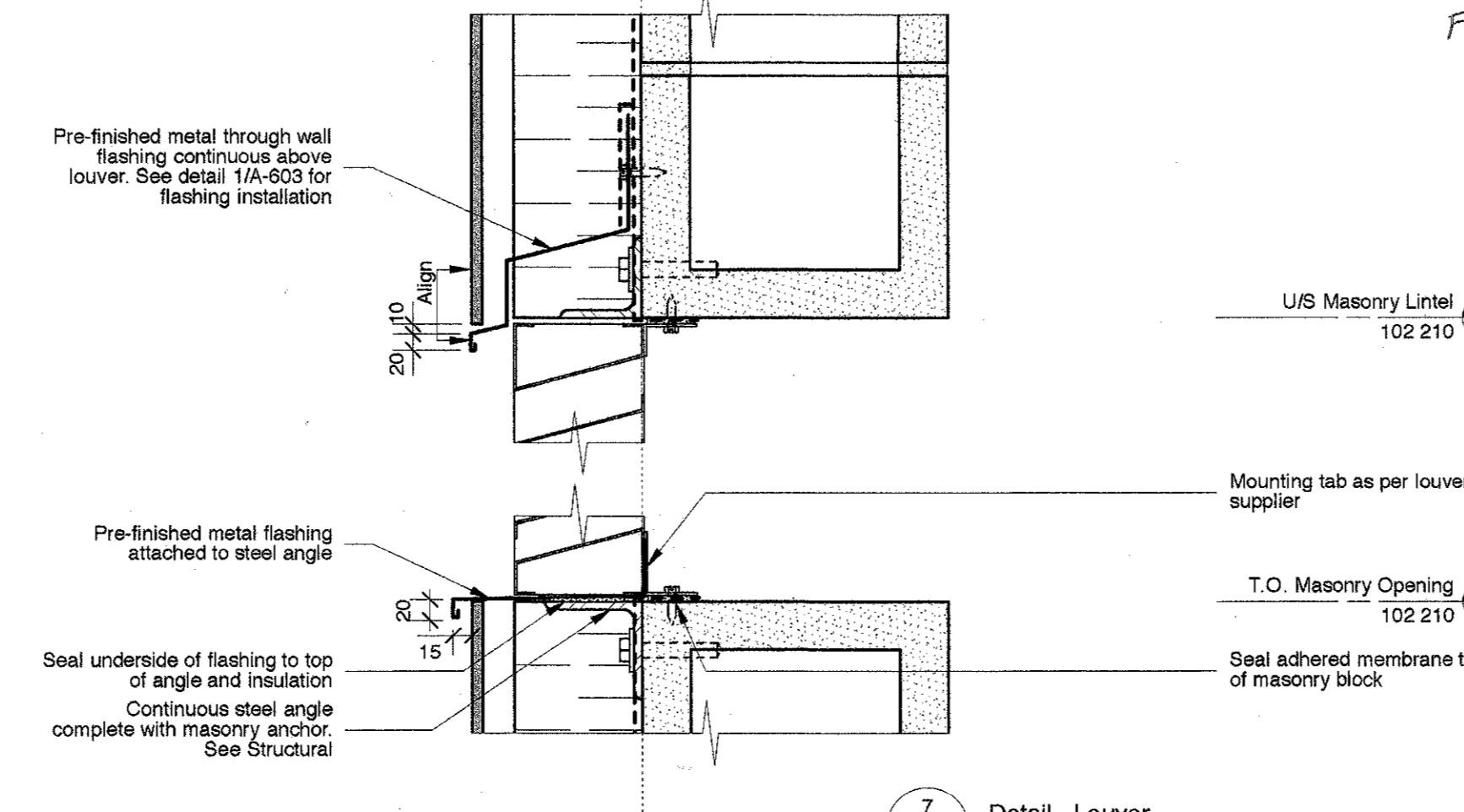
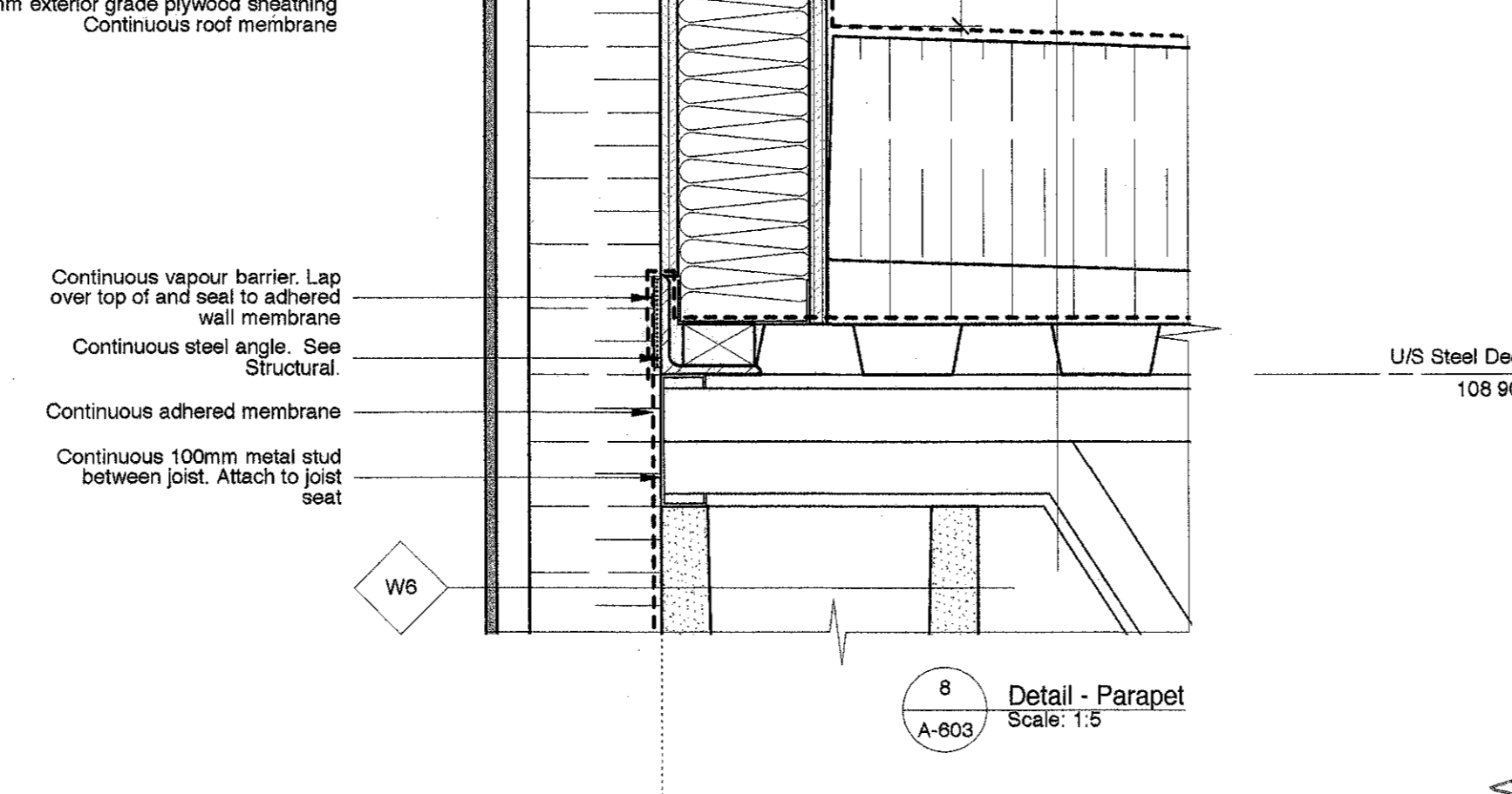
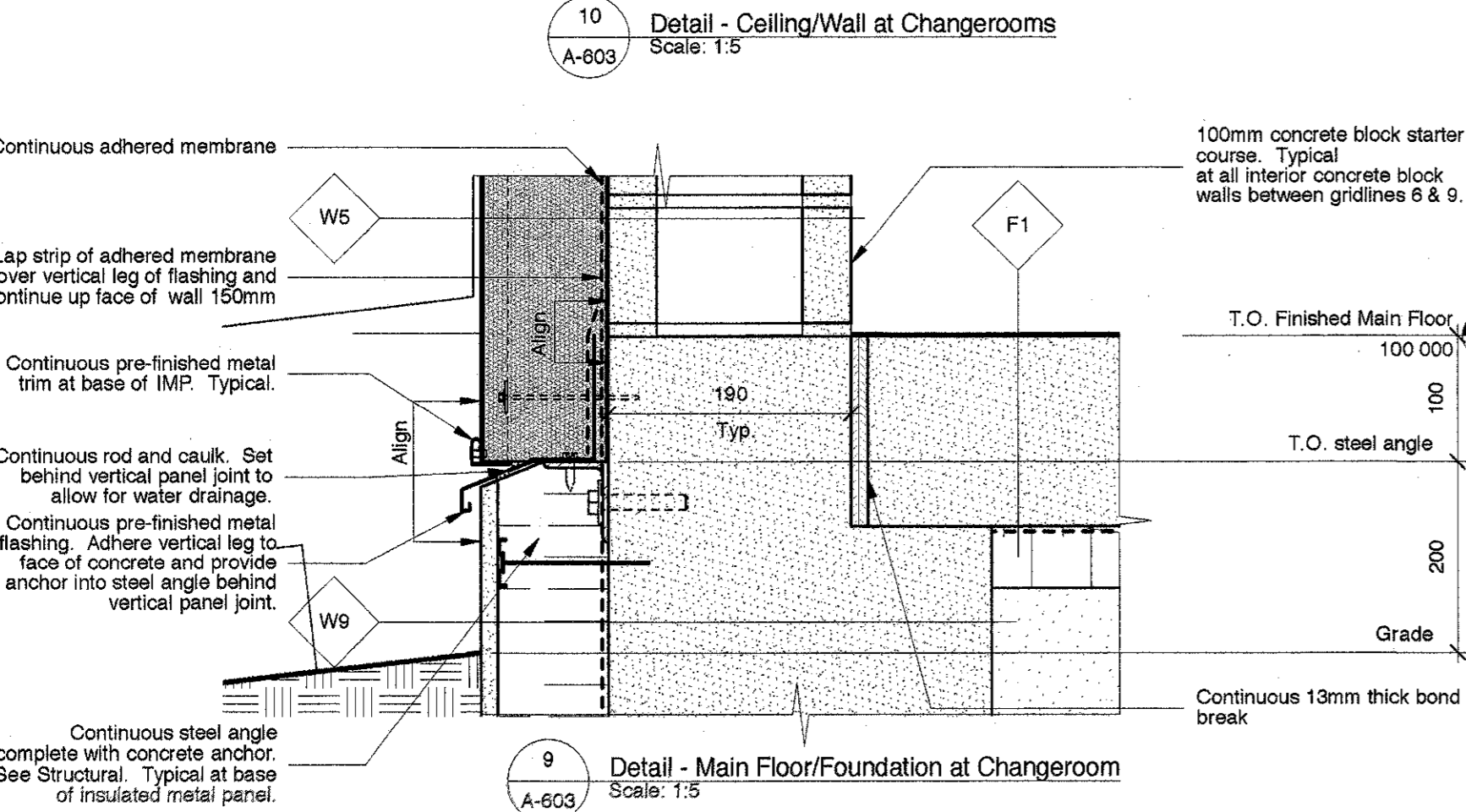
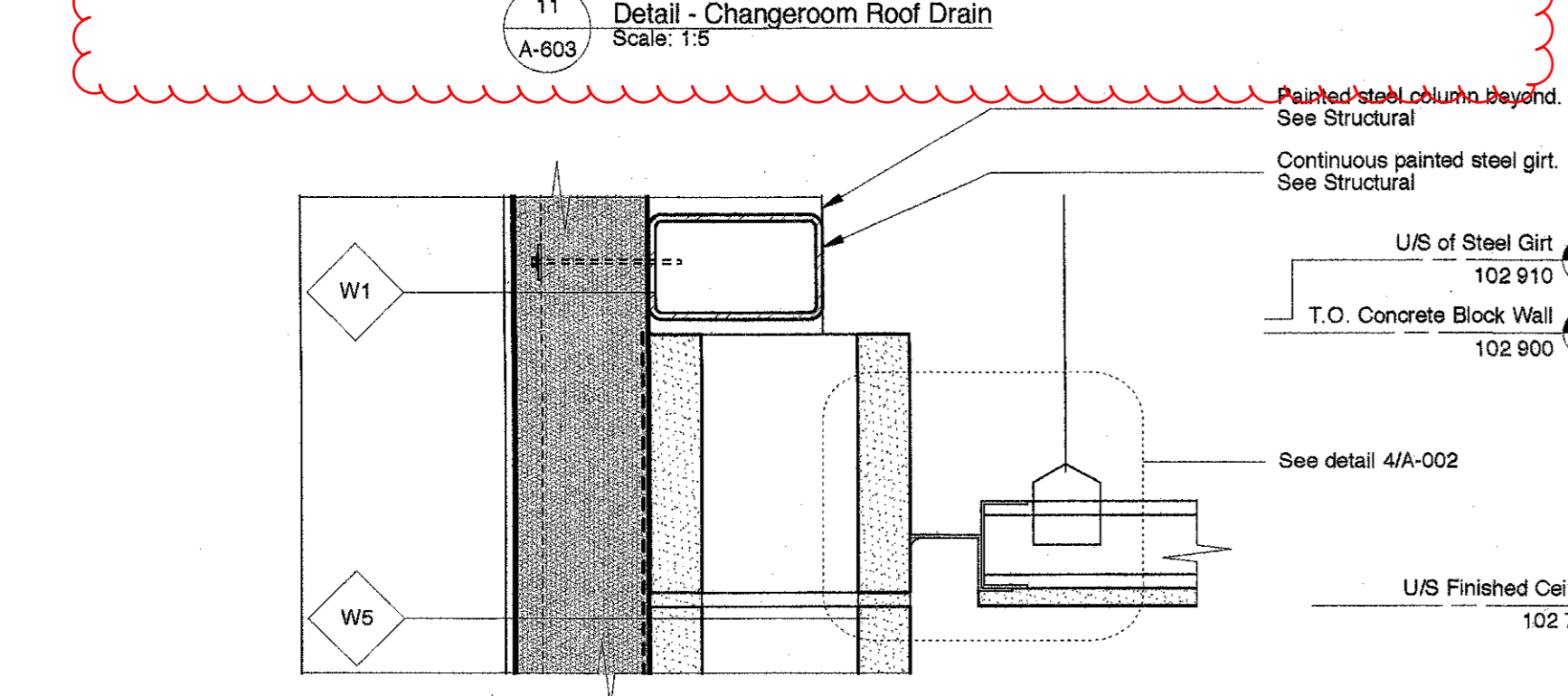
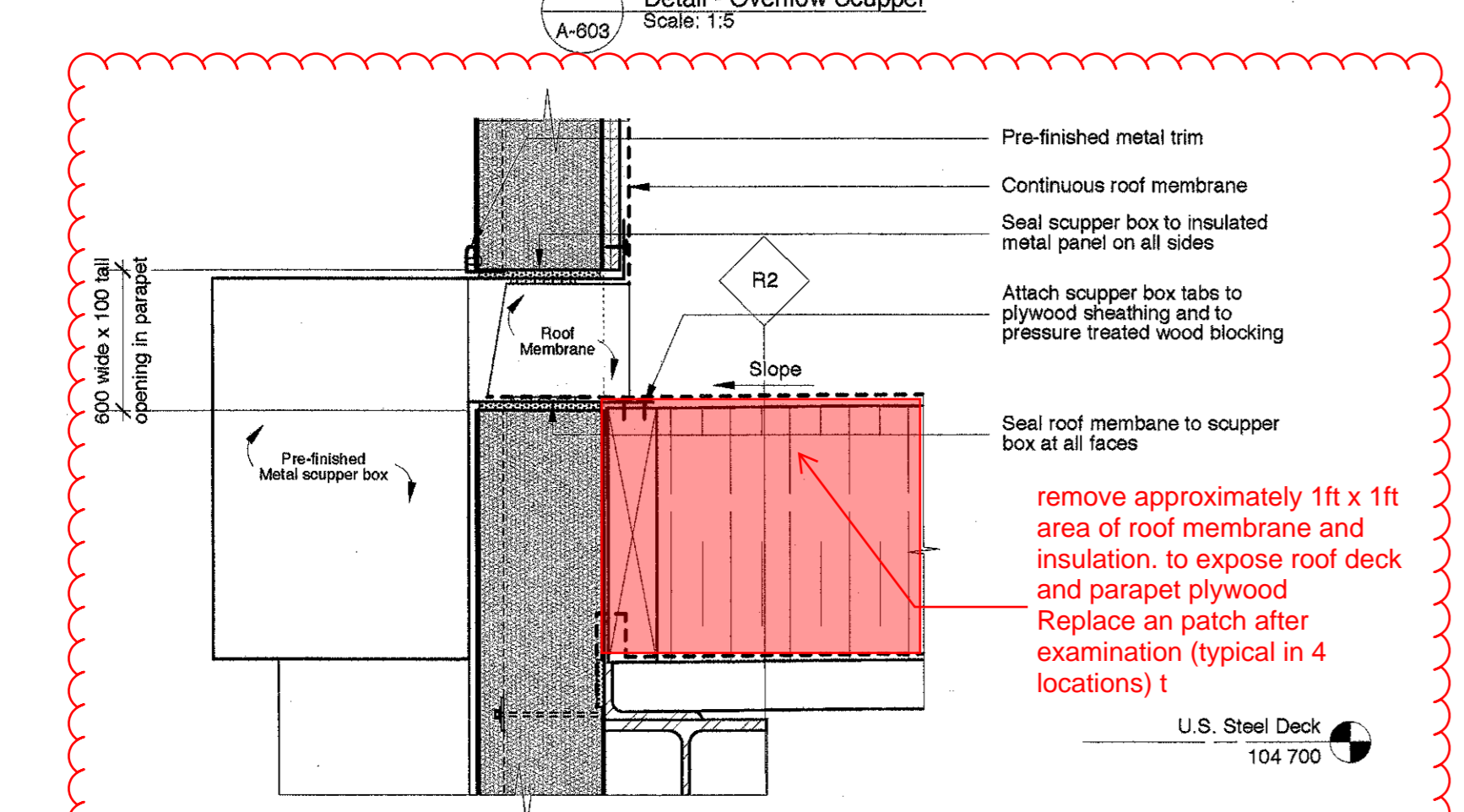
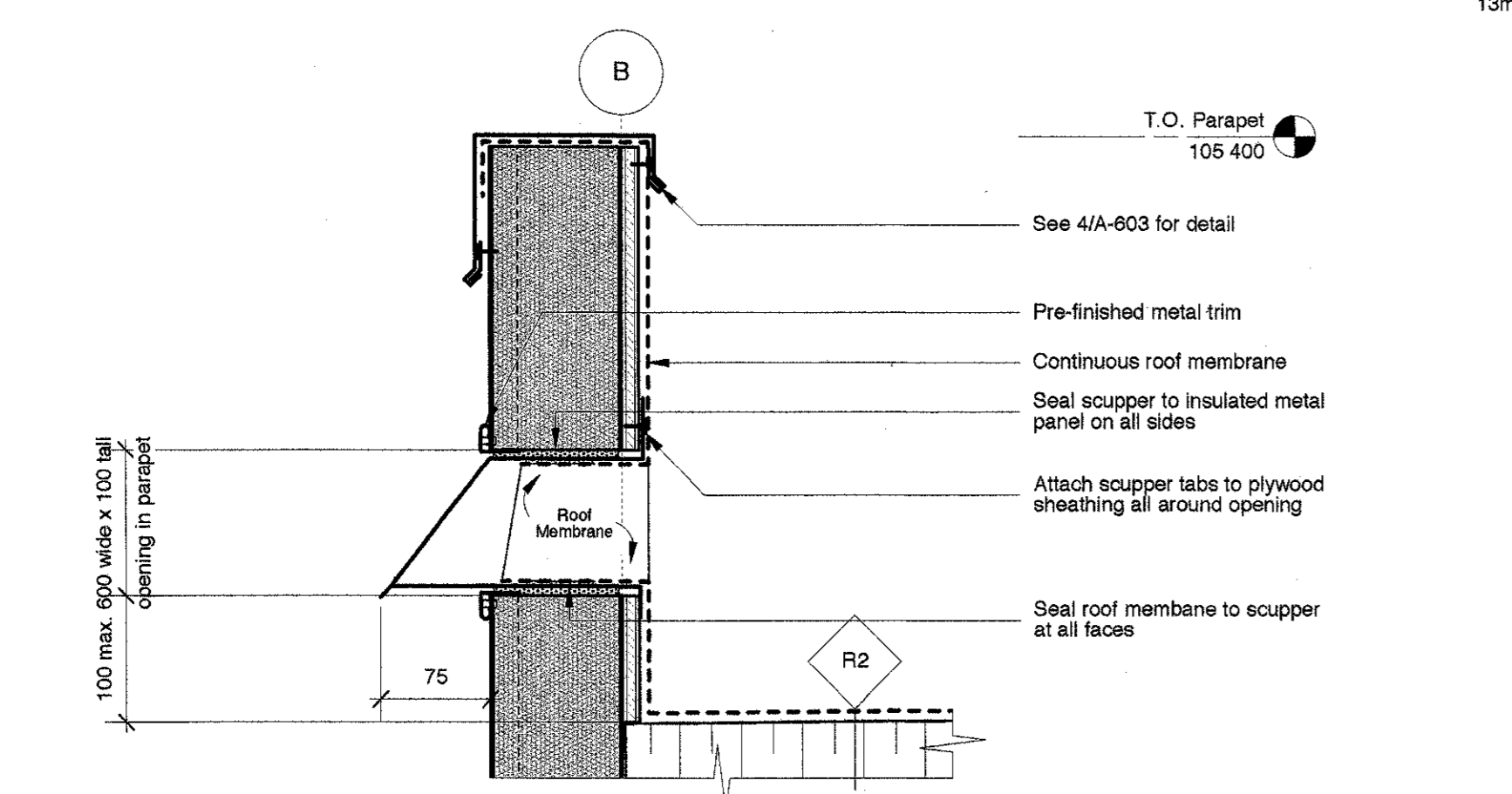
Drawings and specifications as instruments of service are the property of the Architect; the copyright in the same being reserved to him. No reproduction or revision to these drawings may be made without the permission of the Architect, and when made, must bear his name. All prints to be returned to the Architect upon request.

Project  
 1010 Swan Valley Recreation and Wellness Centre  
 Phase One  
 Drawing  
 Roof Plan

Drawn By  
 BTM  
 Scale  
 1:100  
 Date  
 2011/07/12

Reviewed By  
 PS  
 Drawing No.  
 A-202

No.	Date	Revision Notes
1.	2011_02_18	Issued for 33% Review
2.	2011_03_04	Issued for 50% Review
3.	2011_03_18	Issued for 66% Review
4.	2011_04_20	Issued for 99% Review
5.	2011_07_12	Issued for Tender
6.	2011_06_28	Issued for Building Permit



Parapet Cap Construction:  
 Pre-finished cap flashing  
 continuous cleat each side  
 Roof membrane  
 13mm exterior grade plywood  
 38mm exterior grade wood shim  
 13mm exterior grade plywood  
 T.O. Parapet  
 109 500

SEE SI#47  
 FOR REVISED PARAPET DETAILS

remove approximately 1ft x 1ft area of roof membrane and insulation, to expose roof deck and parapet plywood. Replace a patch after examination (typical in 4 locations) t



This drawing must not be scaled. The contractors shall verify all dimensions and other data on site prior to commencement of work. Discrepancies, errors, and omissions are to be reported to the Architect prior to proceeding with the Work.  
 Drawings and specifications as instruments of service are the property of the Architect; the copyright in the same being reserved to him.  
 No reproduction or revision to these drawings may be made without the permission of the Architect, and when made, must bear his name. All prints to be returned to the Architect upon request.

Project  
 1010 Swan Valley Recreation and Wellness Centre  
 Phase One  
 Drawing  
 Section Details

Drawn By  
 MP/L  
 Scale  
 As Noted  
 Date  
 2011/01/20

Reviewed By  
 PS  
 Drawing No.  
**A-603**